



NEW ZEALAND  
ARCHAEOLOGICAL  
ASSOCIATION

**NEW ZEALAND ARCHAEOLOGICAL ASSOCIATION NEWSLETTER**



This document is made available by The New Zealand Archaeological Association under the Creative Commons Attribution-NonCommercial-ShareAlike 4.0 International License.

To view a copy of this license, visit  
<http://creativecommons.org/licenses/by-nc-sa/4.0/>.

ARCHAEOLOGICAL SITE SURVEYS IN THE AUCKLAND METROPOLITAN AREA

Susan Bulmer  
Auckland Regional Filekeeper

The following is a bibliography of archaeological site surveys in the Auckland area, a complement to the two previous lists published in the Newsletter for Northland and the Coromandel. The Northland list (Mitchell, 1979) was stimulated by the Northland seminar of July 1979, and the Coromandel list (Furey, 1980) is a result of detailed research into archaeological field evidence. These areas differ from the Auckland area in that there have been a relatively large number of contract surveys, primarily for the New Zealand Historic Places Trust (NZHPT) and the New Zealand Forest Service. They also differ in the large proportion of rural land.

Site surveying in the metropolitan area over the past few years has gone in a number of directions. Some has been in rural areas not yet subject to 'development', but there has also been a concerted effort to update and upgrade site records in areas of high public use, such as historic reserves, parks, and city domains. There has also been a new focus on regional patterns of prehistoric and historic human land use and settlement, which has resulted in a new level of analysis of field evidence, most notably in Davidson's analysis of settlement on Motutapu (1970) and Best's treatment of settlement patterns and site size on the Hauraki Plains (1980). In a region where only a small proportion of sites may survive urban land use, a knowledge of regional patterns of prehistoric settlement is essential to judging the importance of particular sites.

The following site survey list includes, therefore, not only survey reports of intensive exploration of particular small areas, but results of research including much broader and long-term field studies. It also includes a variety of student projects and essays, which focus in some cases on particular sites and in others on the significance of site distributions and characteristics.

For convenience of reference, the Auckland area has been subdivided into:

1. South Auckland, from the Awhitu Peninsula to the Hauraki Plains;
2. West and central Auckland;
3. The islands of the Hauraki Gulf and offshore;
4. The North Shore suburbs and the north coast to the Mangawhai Head (the extent of the Auckland Regional Authority).

This overlaps somewhat with previous lists; the north coast and offshore islands have been included for comparative purposes with the

northshore suburbs and gulf islands, where urban pressures on sites are greater, and to point up more recent work there. The Kaipara and Coromandel have not been included, although they fall within the Archaeological Association's Auckland file district, because the most recent Kaipara surveys have not yet been written up and the Coromandel has been ably covered by Louise Furey in her 1981 M.A. thesis. There is also a wealth of reports in various stages of preparation resulting from the work of the Auckland Student Community Service Project site surveyors, in Rodney County, Manukau City, Auckland City, Waiheke Island, the Coromandel and many corners of the metropolitan area. These will be reported in future Newsletters in due course.

#### South Auckland

- 1 Best, S. 1979 Site survey report: Lower Waihou River, Hauraki Plains. NZHPT. 52 pp.
- 2 1980 Oruarangi Pa: past and present investigations. New Zealand Journal of Archaeology, 2:65-92.
- 3 Clarke, A.C. n.d. The Manukau lowlands: site distribution pattern. Typescript (1980), 28 pp, 9 figs.
- 4 Deverall, P. 1980 Archaeological survey of the Waiho block, Clevedon. NZHPT Auckland 1980/7 (in preparation).
- 5 Donovan, J.L. 1975 Tapapakanga Reserve Archaeological Survey. NZHPT. 23 pp.
- 6 1976 Orere-Kawakawa Bay Archaeological Survey, December 1975. NZHPT. 90 pp.
- 7 Foster, R. and 1980 Pahurehure Inlet, Archaeological Site  
P. Simmons Survey, November-December 1979. NZHPT  
Auckland 1980/3. 16 pp.
- 8 Gorbey, K. 1969 The Kapuni pipeline salvage archaeology  
survey. N.Z.A.A. Newsletter, 12:218-223.
- 9 Grant, J.R. and 1979 Huntly-Pukekohe Maui Gas Pipeline archaeo-  
logical survey. NZHPT Auckland. 14 pp.
- 10 Green, R.C. 1963 Classic and early Maori sites on the  
and K. Hauraki Plains. N.Z.A.A. Newsletter,  
6:27-33.

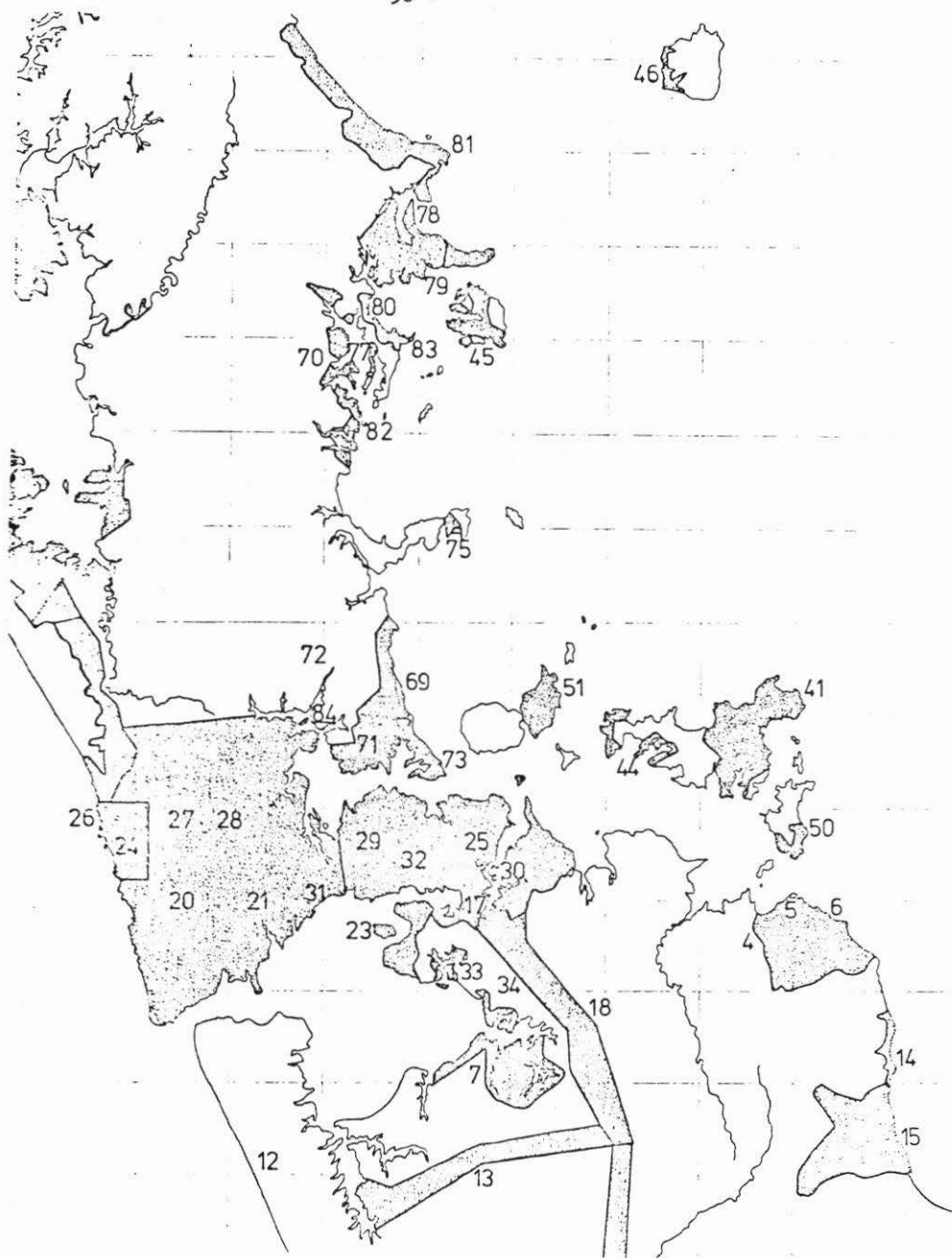


FIGURE 1. Site surveys in the Auckland region.

- 11 Hooker, R.H. 1974 Site survey in the Pukekohe area. Pp. 4-6, figs. 1-5, in Sullivan (ed.).
- 12 Law, G. 1969 Kohekohe ridge pa - a social reconstruction. N.Z.A.A. Newsletter, 12:20-37.
- 13 Lilburn, K. and 1980 Glenbrook Lateral Pipeline: archaeological E. McGrath survey. NZHPT Auckland 1980/6.
- 14 Phillips, A.C. 1976 Waharau Regional Reserve Survey. 15 pp, and G.E.Millynn 5 figs, in Fox et al.
- 15 Phillips, C. and 1977 Archaeological site survey. Site recording and A. Norton on the Kaiiua-Miranda coast. December 1976-April 1977. NZHPT. 58 pp.
- 16 Reid, M.J.S. n.d. A survey of the Maori in the Awhitu peninsula prior to 1870. Essay, Anthropology Dept.
- 17 Tairaroa, R. and 1979 Baird's Store, Otahuhu (N42/905). Class B. Sewell paper, Anthropology Dept. Typescript, 12 pp.
- 18 Tippett, J. and 1980 Archaeological survey of the proposed C. Molloy Maui Gas Pipeline, Pukekohe to Westfield section. 9 pp. NZHPT, Auckland 1980/1.

West and Central Auckland

- 19 Davidson, J. 1975 Archaeological sites in the Auckland region. Auckland Regional Authority, Planning Division.
- 20 Diamond, J.T. 1955 The Maori in the Waitakere ranges. Jnl Polyn. Soc., 64:304-314.
- 21 1961 Fortified settlement sites, Waitakere area. N.Z.A.A. Newsletter, 4:54-55.
- 22 Fairfield, F.G. 1933 Maori fish-hooks from Manukau Heads, Auckland. Jnl Polyn. Soc., 42:145-155.
- 23 1938 Puketutu pa on Weeke's Island, Manukau Harbour. Jnl Polyn. Soc., 47:119-128.
- 24 Firth, R.W. 1925 The Korekore pa. Jnl Polyn. Soc., 34:1-18.

- 25 Groube, L.M. 1960 Mt. Wellington site survey. N.Z.A.A. Newsletter, 3:24-30.
- 26 Hayward, B.W. and 1977 Archaeological sites of the Te Henga  
J.T. Diamond District, Waitakere Ranges, West Auckland.  
NZHPT.
- 27 1978a Prehistoric archaeological sites of the  
Waitakere ranges and west Auckland. New  
Zealand. Auckland Regional Authority.
- 28 1978b Historic archaeological sites of the Wai-  
takere ranges and west Auckland, New Zea-  
land. Auckland Regional Authority.
- 29 Jackson, E.J.T. 1974 Site survey of Owairaka, N42/12. Pp 25-26,  
in Sullivan (ed.).
- 30 Myers, C. 1974 Site survey of Pigeon Mountain, N42/30.  
Pp 22-24, in Sullivan (ed.).
- 31 Noakes, D.S. 1974 Prehistoric settlement at Green Bay.  
Pp 12-14, in Sullivan (ed.).
- 32 Sullivan, A. 1972 Stone walled complexes of central Auck-  
land. N.Z.A.A. Newsletter, 15: 148-160.
- 33 1973 Site survey of lower Pukaki Creek.  
Working Papers in Anthropology, No. 27,  
Anthropology Dept., University of Auckland.
- 34 1975 Checklist of archaeological sites at Crater  
Hill, Papatoetoe. Working Papers in Anthro-  
pology, No. 37. Anthropology Dept.,  
University of Auckland.
- 35 Taylor, A. 1961 Five Manukau pa sites. N.Z.A.A. News-  
letter, 4:56-61.
- 36 1963 House and storage pits in the Auckland  
Province. N.Z.A.A. Newsletter, 6:72-75.
- 37 1966 Maori burial and cremation in the Manukau  
area. Historical Review, 14(4):154-6.
- 38 1970 Agricultural adzes. N.Z.A.A. Newsletter,  
13:86-87.

- 39 Taylor, A. 1972 Manukau caves and rock shelters. N.Z.A.A. Newsletter, 15:161-162.

Offshore and gulf islands

- 40 Atwell, E.G. 1973 Archaeological sites, Great Barrier Island. Tane, 19:157-165.
- 41 1975 Site recording in the eastern half of Waiheke Island. NZHPT. 52 pp.
- 42 1976 A preliminary investigation of the spatial distribution of prehistoric sites on Waiheke Island. Research essay, Anthropology Dept. 36 pp.
- 43 Atwell, E.G., 1975 Archaeological site survey of the Shoe  
J.R.H. Spencer, and Slipper group. Tane, 21:71-90.  
G. Puch and P. Moore
- 44 Bacquie, B. 1974 Site survey, headland pa, Waiheke. Pp 15-  
19, in Sullivan (ed.).
- 45 Bates, J. 1980 Kawau Island archaeological survey. NZHPT,  
Auckland 1980/2. 21 pp.
- 46 Bartlett, J. 1980 Little Barrier Island - Hauturu. Archaeo-  
logical survey 1980. NZHPT, Auckland 1980/  
4. 18 pp.
- 47 Bulmer, S. 1980 The archaeological sites on Aotea (Great  
Barrier) and their management. Report to  
Lands and Survey Planning Division,  
Auckland. 8 pp. and map.
- 48 Butts, D. and 1978 Report on the Kaitoke-Tryphena harbour  
R. Fyfe archaeological site survey, Great Barrier  
Island. NZHPT. 15 pp.
- 49 Coster, J. and 1975 Report on the Kaitoke-Harataonga archaeo-  
G. Johnston logical site survey, Great Barrier Island.  
NZHPT. 14 pp.
- 50 Davidson, J. 1963 Site survey: Ponui Island. N.Z.A.A. News-  
letter, 6:36-44.

- 51 Davidson, J. 1970 Survey of archaeological sites on Motutapu Island. Rec. Auckland Inst. Mus., 7:1-12.
- 52 1972 Archaeological sites in the Hauraki Gulf Maritime Park. Suggested planning considerations. Auckland Museum. Typescript, 10 pp.
- 53 1978 The prehistory of Motutapu Island, New Zealand: five centuries of Polynesian occupation in a changing environment. Jnl Polyn. Soc., 87:327-338.
- 54 Dodd, K.E. 1979 An examination of intensive relationships amongst prehistoric sites on the eastern half of Waiheke. Class project, Anthropology Dept. 9 pp.
- 55 Edson, S.C. 1973 Human ecology and prehistoric settlement on some offshore islands (East Cape to Cape Reinga), New Zealand. Unpublished M.A. thesis, University of Auckland.
- 56 Furey, L and G. Stuart 1980 Great Barrier S.F. 165 Archaeological site survey. N.Z. Forest Service, Auckland Conservancy.
- 57 Golson, J. 1957 New Zealand Archaeological Association. Jnl Polyn. Soc., 64:349-351. (Includes a discussion of field work on Great Mercury Island).
- 58 Hurley, C. and P. Swadling 1969 Little Barrier survey, 1968. N.Z.A.A. Newsletter, 12:204-217.
- 59 Matthews, P.J. 1979 Archaeological site survey on Ponui Island, Hauraki Gulf, New Zealand. Tane, 25:23-33.
- 60 Moore, P.R. 1972 New sites on Red Mercury Island. N.Z.A.A. Newsletter, 15:54-56.
- 61 1973 Evidence of former Maori occupation of the Alderman Islands. Tane, 19:21-29.



- 62 Olsen, K. and D. Foley 1977 Site N43/165, Otakawa Bay, Waiheke Island. Typescript, 3 pp.
- 63 Ramsey, W.R.H. 1970 A note on Maori stonework on Great Barrier Island. Tane, 16:187-188.
- 64 Rowland, M.J. 1975 Tairua and off-shore islands in early New Zealand prehistory. Unpublished M.A. thesis, University of Auckland.
- 65 Spring-Rice, W. 1962 Great Barrier Island. N.Z.A.A. Newsletter, 5:92-95.
- 66 1963 Harataonga, Great Barrier Island. N.Z.A.A. Newsletter, 6:25-27.
- 67 1980 Archaeological sites on Fanal Island, Mokohinau group. Tane (in press.)
- 68 Stevenson, L.B. 1974 Preliminary site recording at Otat Island (Noises). Pps. 29-31, in Sullivan (ed.).

North Shore and coast north of Auckland

- 69 Brimble, D. and S. Flintoff 1980 Castor Bay Point to Toroa Point, East Coast Bays. Class paper, Anthropology Dept., University of Auckland. 22 pp.
- 70 Fox, A. n.d. Archaeological sites in Mahurangi West Regional Park. Report to the Auckland Regional Authority. (in preparation).
- 71 Glover, L. and V. Rickard 1980 Archaeological sites in Birkenhead City. Site survey January-February, 1980. NZHPT Auckland 1980/5. 6 pp.
- 72 Grace, C., R. Kay and G. Wong 1980 Te Tauhinu pa, Paremoremo. Class project, Anthropology Dept., University of Auckland, 9 pp.
- 73 Maingay, J, J. Connors and P. Connors 1980 Site surveys at Northcote, Devonport and Takapuna, 1979-80. 40 pp.
- 74 McKinney, B.H. 1979 Sugar Loaf Mountain (N34/8), Warkworth. P 3, figure, in Sullivan (ed.).

- 75 Millynn, G.E. and M. Campbell 1976 Shakespear Regional Park archaeological survey. 12 pp, in Fox et al.
- 76 McKay, J. 1979 Ti Point sites, North Auckland. 3 pp, map.
- 77 Morwood, M.J. 1975 Mahurangi: site survey and ethnohistory. N.Z.A.A. Newsletter, 18:82-89.
- 78 Newman, M. 1975 Site recording on the Leigh-Pakiri coast, North Auckland. NZHPT. 13 pp.
- 79 Newman, M. and W. Spring-Rice 1976 Tawharanui Regional Reserve archaeological survey. 18 pp., 16 figures, in Fox et al.
- 80 Nichol, R. 1977 Mahurangi site survey. NZHPT, 51 pp.
- 1980 Site survey methods: standardisation and comparability. (Refers to Mahurangi). N.Z.A.A. Newsletter, 23:86-93.
- 81 Pearce, P. n.d. South Mangawhai Head and sand dunes, 1978. (In preparation)
- 82 Spring-Rice, W. n.d. Archaeological sites in Wenderholm Regional Park. Report to the Auckland Regional Authority. (In preparation)
- 83 Walton, A. 1976 Site recording on the east coast of the Mahurangi Peninsula between Snells Beach and Martins Bay. NZHPT. 10 pp.
- 84 Watt, R.J. and R.E. King 1974 Tauhinu site survey. N.Z.A.A. Newsletter, 17:31-36.

General references

- 85 Fox, A. 1977 Pa of the Auckland isthmus: an archaeological analysis. Rec. Auckland Inst. Mus., 14:1-24.
- 86 Fox, A. et al. 1976 Archaeological Site Reports. Parks Department, Auckland Regional Authority, 2A/76.
- 87 Furey, L. 1980 Archaeological site surveys of the Coromandel peninsula and adjacent off-shore islands. N.Z.A.A. Newsletter, 23:161-168.

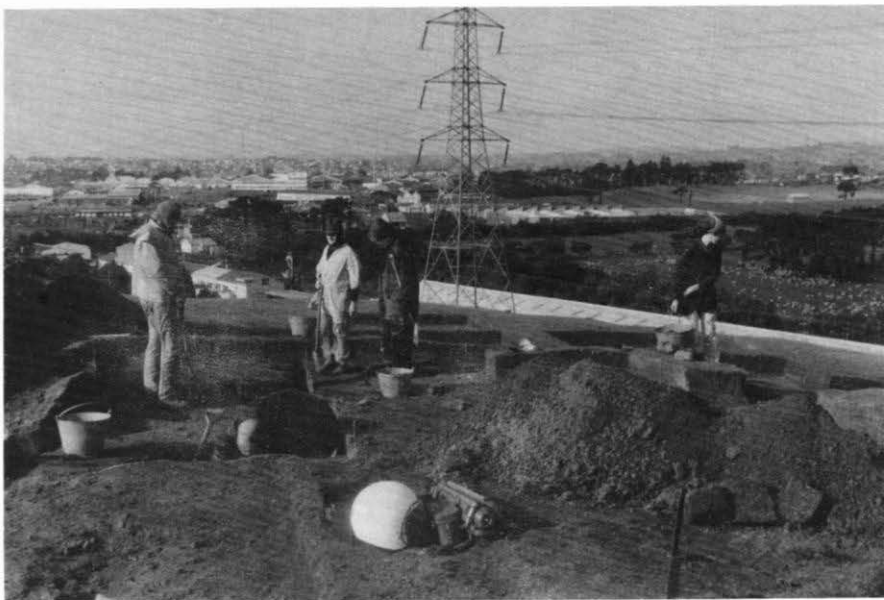
- 88 Mitchell, J. 1979 Archaeological site surveys in Northland. N.Z.A.A. Newsletter, 22:142-153.
- 89 Sullivan, A. (ed.) 1974 Class Projects in Prehistory. Working Papers in Anthropology, No.33. Anthropology Dept., University of Auckland.



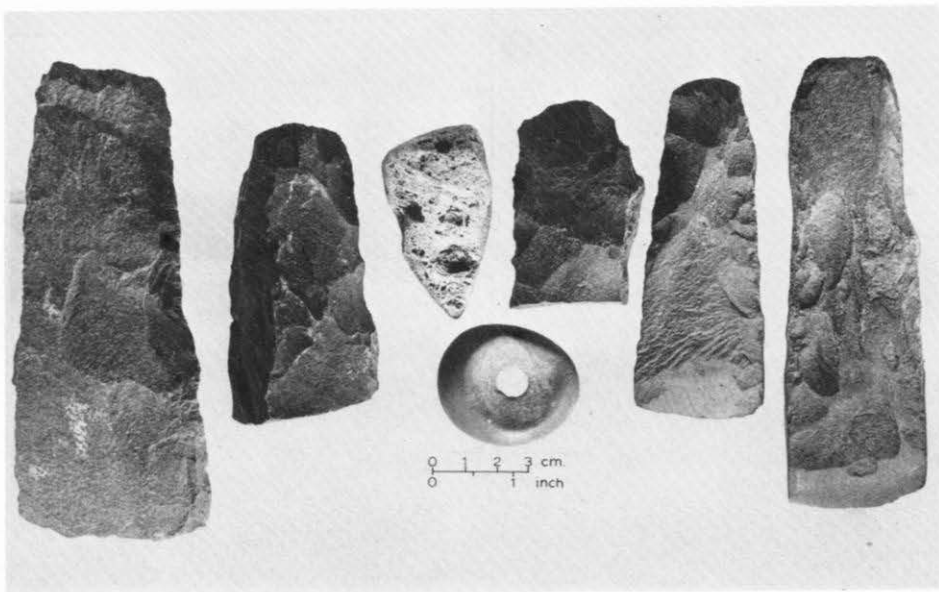
AUCKLAND ARCHAEOLOGY Plate 1. Mt Wellington.



AUCKLAND ARCHAEOLOGY Plate 2. The Sunde Site, Motutapu Island.



AUCKLAND ARCHAEOLOGY Plate 3. Hamlins Hill excavations, 1976.



OPITO ARTEFACT Plate 1. Assemblage including worked chert pebble.