



NEW ZEALAND
ARCHAEOLOGICAL
ASSOCIATION

NEW ZEALAND ARCHAEOLOGICAL ASSOCIATION NEWSLETTER



This document is made available by The New Zealand
Archaeological Association under the Creative Commons
Attribution-NonCommercial-ShareAlike 4.0 International License.

To view a copy of this license, visit
<http://creativecommons.org/licenses/by-nc-sa/4.0/>.

At the very bottom, resting on the limestone rubble "natural", I found bone points for two-piece fish hooks which are indistinguishable from those from many other late "Classic" Maori sites. Not one piece of moa bone, worked or unworked, was recovered from this part of the site.

Although there is probably a considerable period of time represented by the "build-up" of the deposit at Point Two, there is little or no typological difference between the artifacts from the various layers.

In my opinion, it is not yet possible to correlate the layers from the beach site (Point Four) and the central portion (Point B) with any exactitude. A line of squares connecting the two points is imperative if this correlation is to be proved or otherwise.

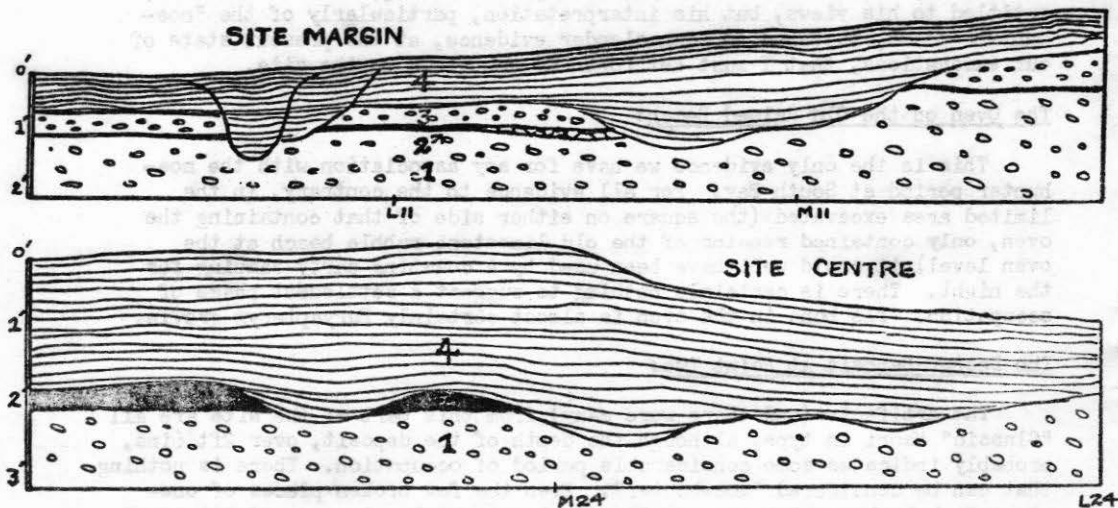
The occurrence of European pottery and other debris at the beach site is easily accounted for, Last century, and again about the twenties of this century, whaling stations operated there.

"Fish awls" in the list of artifacts from Layer 4 is a slip of the pen for "awls made from bird wing and leg bones". There is a lamentable failure on Tony's part to distinguish, in his report, between the artifacts from Points A and B.

Finally, I do not understand his reference to "the occurrence of bones in articulation" - it should be, "position of articulation" - I know of no such finds although it is possible to associate a very few bones to an individual skeleton.

-----ooooo0000ooooo-----

Omitted from June 1963 issue: A. Fomison, Excavations at South Bay, Kaikoura.



EXCAVATION SOUTH BAY, DIAGRAMMATIC CROSS-SECTIONS