



NEW ZEALAND
ARCHAEOLOGICAL
ASSOCIATION

NEW ZEALAND ARCHAEOLOGICAL ASSOCIATION NEWSLETTER



This document is made available by The New Zealand Archaeological Association under the Creative Commons Attribution-NonCommercial-ShareAlike 4.0 International License.

To view a copy of this license, visit
<http://creativecommons.org/licenses/by-nc-sa/4.0/>.

NOTES AND NEWS

With this issue comes a copy of the Association's new membership pamphlet. The Association greatly needs to increase its membership and the pamphlet is designed to help achieve this. Membership has been fairly static now for a number of years with quite a large number of new members each year but with an about equivalent loss of old members. If everyone puts their copy of the pamphlet in the hands of one potential member we might double our numbers!

Costs of running the Association have escalated rapidly in recent years and a larger membership is needed to help spread the load and so hold subscription levels. More subscriptions will pay for our publications on New Zealand archaeology, the costs of the Site Recording Scheme and other costs of administering the Association. An increased membership will also add strength to our voice on local and national issues connected with the conservation and preservation of archaeological sites.

More copies of the pamphlet are available from the Secretary.

Applications closed on 23 November 1979 for an Historic Places Trust Project Director at the Brunner Industrial Site near Greymouth. This is an exciting new venture in industrial archaeology for New Zealand, and one that should generate new interest in research into this aspect of archaeology.

Jill Hamel has been appointed Anthropologist at the Otago Museum where she joins Wendy Harsant. Jill took up her position on 15 October. Roger Fyfe, a recent graduate in anthropology from Otago University, has been appointed Deputy Director of the Taranaki Museum.

Atholl Anderson writes, "At a buffet dinner on the 9 November, in Dunedin, Ron Scarlett was presented with a specially bound copy of the festschrift, Birds of a Feather : Osteological and Archaeological Papers from the South Pacific in honour of R.J. Scarlett, edited by Atholl Anderson (N.Z.A.A. Monograph 11). The dinner was held in the staff Common Room of the new Hocken Building at Otago University and was attended by about 50 people. Many old friends of Ron's turned out for the occasion, including Les Lockerbie, Hardwicke Knight, Michael Hitchings, Roger Green, Janet Davidson and the staff of the Anthropology Department and Otago Museum. Highlights of the speeches were a spirited recitation

by Janet of an ode to Ron written he thought, by a "naughty cassowary" and Ron's own emphatic denial that he deserved to be honoured for his contribution to New Zealand archaeology because he has had so much fun in his career. His Auckland friends presented him with a card and donation and his friends in Dunedin with a plated and inscribed trowel."

An Ode Addressed to Mr. R.J. Scarlett and Friends, on the Occasion of the Presentation to him of that Estimable Volume, "Birds of a Feather"

by Dinornis bulmerus

For Ronald and his kindred flock
Gathered for this presentation
May the hallow'd Hocken rock
With speech and song of acclamation
And toasts be drunk without apology
To avian-osteo-archaeology

As birdmen rise above their birds
And diggers from their excavations
Let avian cries join human words
In paeons from Ron's resuscitations,
Chanting from the Faunal List,
"Ron described us: we exist!"

Let the ratites rise and rattle
Owlet-nightjar nightly howl
Auckland Isles Merganser quackle
(Once again a Mainland fowl)
Goshawk, though Circus somewhat riles he,
Scream that he's still proudly eylesi

Since sticks and stones are found with bones
- And which broke which can be a mystery -
Ron's fossicking in swamps and cones
Unites man's past with Natural History.
So bird-word lists yet lengthier far let
Flow of species novae R.J. Scarlett!

Atholl Anderson (ed), Birds of a Feather : Osteological and archaeological papers from the South Pacific in honour of R.J. Scarlett.
British Archaeological Reports, International series 62, 1979.
New Zealand Archaeological Association Monograph 11. 295 pp., 53 figures.
NZ \$20.

The contributors and titles of papers are as follows:

- J.C. Yaldwyn - The Types of W.R.B. Oliver's Moas and Notes on Oliver's Methods of Measuring Moa Bones.
T.H.V. Rich, P.V. Rich, R.E. Fordyce, P. Gatehouse and R.J. Scarlett - A Deceptive Terrestrial Vertebrate Fossil Site on the Waipara River, North Canterbury, New Zealand.
G.F. van Tets - Avifaunal Composition of Skeletal Material collected from Skua middens and beaches at some Australasian Sub-Antarctic Islands.
G.E. Hamel - The Breeding Ecology of Moas.
R. Bulmer - Tameness and Mystical Associations of Wild Birds.
R.J. Scarlett - Avifauna and Man.
E.W. Dawson - Some Osteographic Contemplation on Maori and Kakapo in Early Wellington.
B.F. Leach - Maximising Minimum Numbers: Avian Remains from the Wash-pool Midden Site.
D.G. Sutton - Island and Coastal Fowling Strategies of the Prehistoric Moriori.
B.F. Leach and A.J. Anderson - Prehistoric Exploitation of Crayfish in New Zealand.
J. Allo Bay-Peterson - The Role of the Dog in the Economy of the New Zealand Maori.
J.M. Davidson - Archaic Middens of the Coromandel Region; A Review.
M.M. Trotter - Tai Rua: a Moa-hunter site in North Otago.
H.M. Leach - The New Zealand Octopus Lure: Fact or Fiction.
J. Specht and S. Specht - Axe Heads and Zoomorphs in the Solomon Islands.
G. Law - Cultural Processes limiting Diversity in New Zealand Prehistory.
P. Gathercole - Maori Godsticks and their Stylistic Affinities.

The Association has ordered a limited number of Birds of a Feather from England and these should become available in the New Year. Members can order from the Sales Manager, N.Z.A.A., Auckland Museum, Private Bag, Auckland for \$21.05 (which includes \$1.05 postage). Please send money with the order. Should orders exceed the number available, a further shipment will be ordered from England.

- - - - -

The University of Auckland Anthropology Department has a surplus of some journals in the department library which it wishes to exchange for items which are missing in its holdings. Journals of which numbers are available for exchange include Language, Man, Oceania, Journal of the Polynesian Society, Sarawak Museums Journal, Current Anthropology and Journal of the Royal Anthropological Institute of Great Britain and Ireland. Complete lists of journals available for exchange and of those required are available from the Librarian, Anthropology Department, University of Auckland, Private Bag, Auckland.

A recent book on Auckland's early soft drink industry will be of interest to archaeologists concerned with the historical period in New Zealand: Keith G. Rusden, Aerated Water Manufacturers of Eden Crescent 1845-1964 : a history of the soft drink industry of Auckland. Published by the author, Auckland, 1979. 60 pp. \$4.80.

The book is in two parts: a history of the Eden Crescent soft drink industry is followed by an illustrated catalogue of the soft drink bottles of the industry with manufacturing and dating information. The book can be obtained from the author at 32 Rowan Road, Auckland 3, for \$4.80 plus 30c postage and packing.

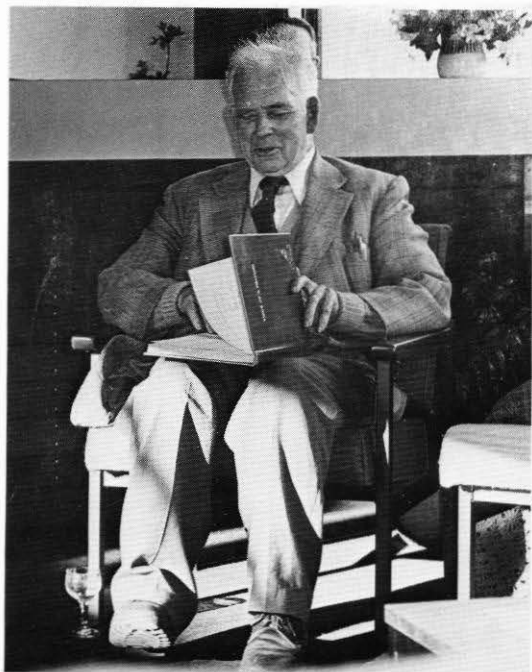
Jack Diamond and Bruce Hayward have again added to their list of publications on the archaeological landscape of the Waitakere Ranges, west of Auckland. John T. Diamond and Bruce W. Hayward, The Maori History and Legends of the Waitakere Ranges. The Lodestar Press, Auckland, 1979. 48 pp. \$4.25.

The book combines legendary and historical accounts with archaeological observation in a thoroughly satisfying way. Photographs illustrate the range of archaeological evidence, while maps and photographs skilfully link history, legends and archaeology. The design and layout of this modest book deserve special commendation while the drawings by Melville Diamond add greatly to its charm.

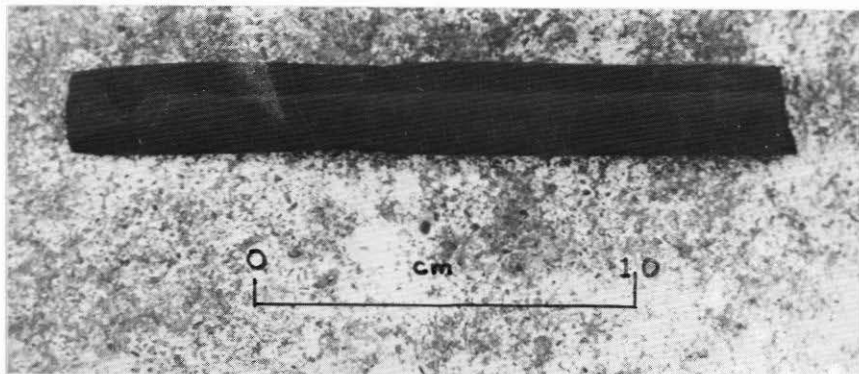
The Auckland Conservancy of the New Zealand Forest Service has a vacancy for one or two experienced archaeological fieldworkers to conduct site surveys and recommend appropriate management of archaeological sites within State forests in the northern third of the North Island (north and west of a line extending from the Mokau River mouth to Tauranga).

Employment would be by contract commencing in February 1980. The contract term will be negotiable. The appointee(s) will be based in Auckland but considerable fieldworks and travel will be necessary. They would be required to take responsibility for planning work and allotting priorities.

Applications close 11 January 1980. For further information, phone 33-269 Auckland (R. Dale or J. Coster). Written applications and enquiries should be sent to: The Conservator of Forests, N.Z. Forest Service, P.O. Box 39, Auckland.



SCARLETT PRESENTATION. Atholl Anderson presents Ron Scarlett with 'Birds of a Feather'.



WAIANAKARUA. Parallel-sided chisel in black basalt or argillite.