



NEW ZEALAND
ARCHAEOLOGICAL
ASSOCIATION

NEW ZEALAND ARCHAEOLOGICAL ASSOCIATION NEWSLETTER



This document is made available by The New Zealand Archaeological Association under the Creative Commons Attribution-NonCommercial-ShareAlike 4.0 International License.

To view a copy of this license, visit
<http://creativecommons.org/licenses/by-nc-sa/4.0/>.

NOTES AND NEWSRecent publications

There has long been a cry from within our Association for factual and up to date information on New Zealand archaeology for schools. One of our members, Kathryn Rountree, is now setting out to do something about it. In the last twelve months she has had published by Longman Paul three school booklets on aspects of our past and archaeology.

Kathryn Rountree, The Earliest New Zealanders. Longman Paul, Auckland, 1983. 32 pp.

This publication gives an account of the arrival of the first Polynesians in New Zealand and how they set about making a living here. The second part gives something of the results of recent archaeological work. Questions and projects are designed for pupils and teachers.

Kathryn Rountree, Polynesian Explorers. Longman Paul, Auckland, 1983. 24 pp.

This booklet concentrates on Polynesian voyaging and the history of Polynesian voyaging and the history of Polynesian exploration of the Pacific. Again it is designed for a class situation.

Kathryn Rountree, Finding Out About the Past. Longman Paul, Auckland 1984. 31 pp.

Doug Sutton's excavations at Pouerua are used here to talk about how archaeologists go about their job. There are lots of photographs and an interview with the archaeologist.

In general these booklets are excellent introductions to the subjects they cover, and should serve to improve knowledge of the past not only among nine and ten year olds but their teachers as well. Perhaps their least successful aspect are the line drawings. The same artist did them in all the books - they are not good. But I know from personal experience how very hard it is to get able artists who are interested in this kind of illustrating.

Jim Specht, The Prehistoric Archaeology of Norfolk Island. Pacific Anthropological Records, No 34, 1984. 76 pp., illustration, bibliography, appendices.

Norfolk Island was unoccupied when visited by Cook in 1774. Fourteen years later the first infamous penal colony was established. There is however, some tantalising evidence for much earlier occupation. In this book the author brings together all the available evidence and concludes that landings from eastern Polynesia took place between 1000 and 1400 A.D. and later from New Zealand between 1400 and 1774 A.D.

When will our Association produce guide books on archaeological topics? The Geological Society of New Zealand has an excellent series. The latest is:

R.A. Cooper, Cobb Valley: A Geological Guide. Geological Society of N.Z. Guidebook, No 6, 1984. 48 pp., glossary. \$4.50.

What a lovely part of the world is Cobb Valley, and full of trilobites and graptolites too!

- - - - -

A message from the President

"Like the captain of the plane and his passengers I'm remote from most members of N.Z.A.A. - but I intend to be as vital to the job as that pilot. But unlike the pilot, the president and the officers of the Council of the New Zealand Archaeological Association are not there to just carry the members. Each one of you is a vital contributor to the recognition and reporting of archaeological sites and activity. The Association has always been a diverse body of people. Each member of that body has special skills and we are linked by the desire to know more about the past in New Zealand.

Our biggest and continuing contribution has been the file of archaeological sites. This is the basis for the archaeological section of the Historic Places Trust and the work of regional filekeepers and site recorders throughout New Zealand. But it is an open-ended file system - so many sites are not on record. Your district may very well be unrecorded; it is unlikely to be devoid of sites. Any sign of human activity, European as well as Maori, that has taken place 100 years or more ago can be recorded. If you know of these places get in touch with your regional filekeeper through your nearest museum.

In the last three decades specialists and professionals seem to have almost outnumbered the dedicated amateur. But the Archaeological Association is a body for all who wish to

join and promote the aims for which it was formed, "to encourage and strengthen communication between ... amateur and professional"

Mary Jeal

Addendum

The illustrations given on the next two pages were omitted from Kevin Jones' paper "Archaeological investigations in the Waiotahi Valley, Bay of Plenty, November 1981", (Vol 27:107-118, 1984).

The figures show two sites. Opposite is a plan of Pukehau (N78/189), Waiotahi Valley, mapped by tape and compass, and a section through ditches: 1. firm yellow brown ash, 2. grey pumice loam, 3. dark brown humus, 4. redeposited topsoil. Hatched area disturbed by bulldozing. Over the page is N78/339, Waiotahi Valley. The stratigraphy shows, 1. stiff yellow clay, 2. yellow-brown pumice gravel, 3. yellow brown ash, 4. grey-brown loam wash, 5. black humus (fern soil), 6. grey loam topsoil.

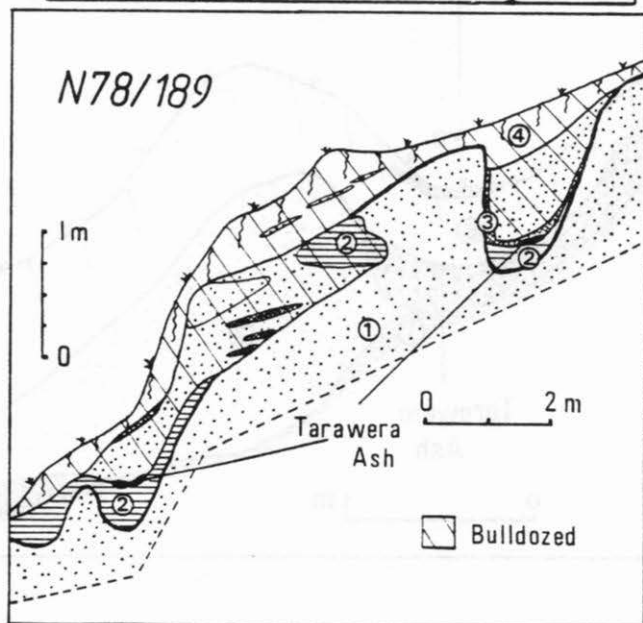
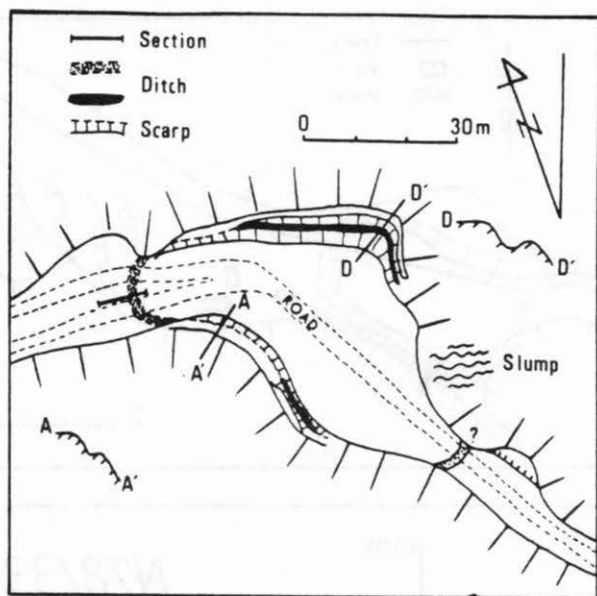
N.Z. Institute of Archaeologists

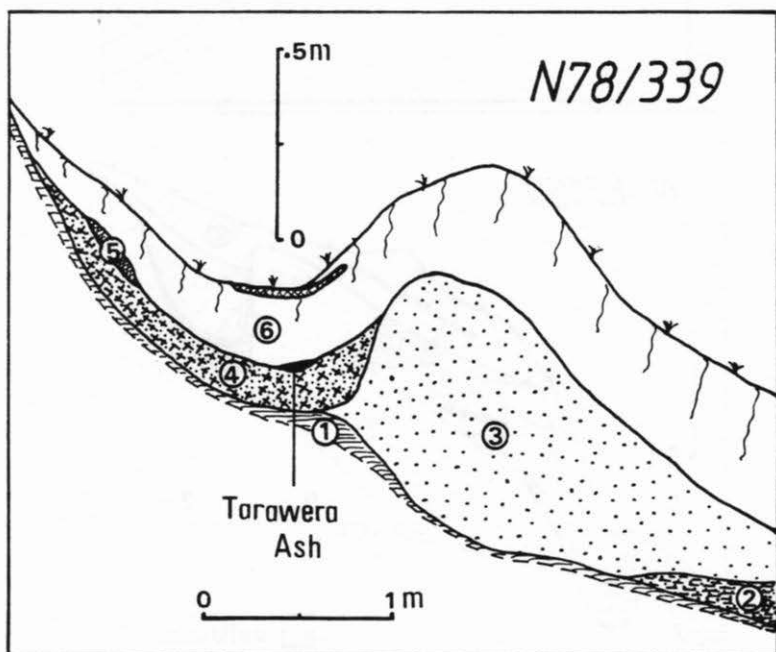
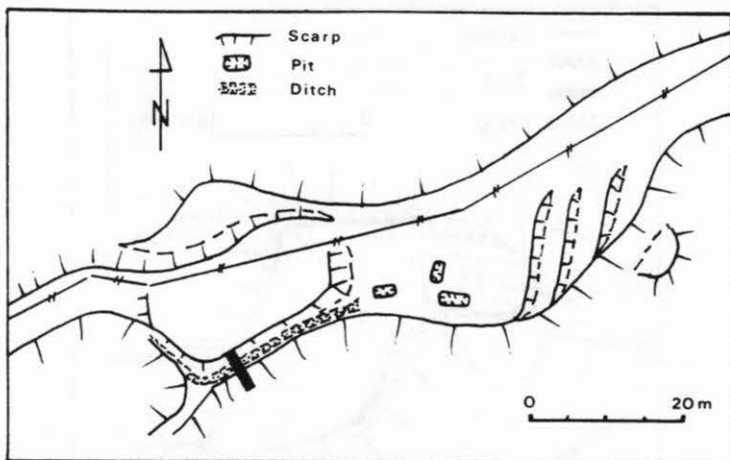
Louise Furey writes,

"At the Association's Oamaru conference in June a New Zealand Institute of Archaeologists was set up. Over the conference weekend there was a lot of discussion which culminated in the formation of the Institute and the election of an Interim Council. The background to, and aims of this organisation have been set out in a recent Newsletter article. While many archaeologists view the Institute as functioning primarily to oversee contract archaeology, the Interim Council hopes that it will be supported by the wider archaeological community.

The Interim Council, elected at the inaugural meeting in Oamaru are:

Chairperson	Ian Lawlor
Secretary	Louise Furey
Treasurer	John Coster
Council	Bruce McFadgen
	Caroline Phillips
	Lyn Williams





A Membership Committee of Roger Green, Helen Leach and Neville Ritchie has been elected, in a postal ballot, by those present at the inaugural meeting. These three archaeologists will soon have the task of reviewing applications for membership to the Institute.

The Interim Council hopes to develop a good working relationship with the Association, and towards this end the two councils have four members in common. It was heartening to the Interim Council to receive motions of support from both the Association Annual General Meeting and the new Association Council.

The Interim Council is planning to produce a regular newsheet, to be distributed to anyone interested, outlining job vacancies, discussion of current topics and other news. If any Association member is interested in receiving this, please notify the Secretary at 3 Burnley Tce, Mt Eden, Auckland 3."

- - - - -

Trust publications

Anne Geelen writes:

"The Trust publication, Vegetation Management on Archaeological Sites by G. Hamel and K. Jones, has been reprinted and can be purchased from the Trust for \$2.50. Other Trust publications still available are The Goldfields Seminar at \$5.00 and Archaeological Resource Management in Australia and Oceania at \$7.50. The Trust's magazine Historic Places in New Zealand contains articles of interest to archaeologists. It is published quarterly and sells in bookshops at \$2.00 a volume. Members of the Historic Places Trust (individual membership \$10 per annum) receive free issues of the magazine.

Manuscripts which are available on request are "The Trust's Policy on Archaeological Sites", "Shipwrecks and Legislation Protecting New Zealand's Heritage", "Bibliography of Unpublished Site Survey Reports held by the Trust" and copies of individual site survey reports. A charge for xeroxing and postage will be made."

- - - - -